

Time and hours meters electromechanic

Hour counters with DIN dimensions

Display 7-digits, VAC trigger

B 148



B 148 for AC

Technical data - electrical ratings

Voltage supply	18...26 VAC / 50 Hz 110...120 VAC / 50 Hz 220...240 VAC / 50 Hz 350...400 VAC / 50 Hz 110...127 VAC / 60 Hz 220...240 VAC / 60 Hz
Nominal frequency	50 / 60 Hz
Power consumption	1 VA
Running accuracy	Synchronous to mains

Features

- Time and hour counter
- AC voltage
- 7-digit number wheel counter
- Counting capacity: 99999.99 h
- Without reset
- Operation indicator

Description

Baumer hour counters are applied anywhere to make costs become evident, to observe maintenance intervals, to define warranty periods or to record operation hours.

Technical data - mechanical design

Display	White numbers on black Decimal digits in yellow
Number of digits	7-digits
Digit height	4 mm
Counting capacity	99 999.99 h
Reading accuracy	1/100 h = 36 s
Ambient temperature	-20...+55 °C
Storage temperature	-20...+70 °C
Relative humidity	80 % non-condensing
Protection DIN EN 60529	IP 20 (surface mount / DIN rail housing) , IP 42 (built-in housing)
Housing type	Built-in housing Surface mount housing Surface mount DIN rail housing EN 50022
Connection	Screw terminal connector Flat connector outlet
Mounting	Clip frame for built-in housing Rear screw mount Snap-on base for DIN rail EN 50022
Dimensions W x H x L	48 x 48 x 43 mm
Cutout dimensions	45 x 45 mm (+0.6)
Mounting depth	33 mm
Weight approx.	60 g
Material	Housing: plastic

Time and hours meters electromechanic

Hour counters with DIN dimensions

Display 7-digits, VAC trigger

B 148

Part number

B 148.0

	X		C
--	---	--	---

Voltage / Frequency

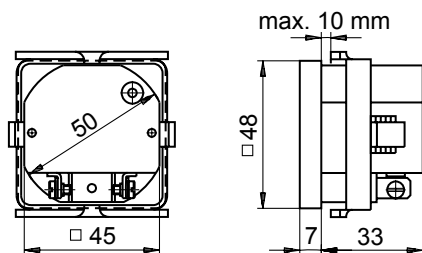
- C5 18...26 VAC / 50 Hz
- C8 110...120 VAC / 50 Hz
- C9 220...240 VAC / 50 Hz
- CZ 350...400 VAC / 50 Hz
- D8 110...127 VAC / 60 Hz
- D9 220...240 VAC / 60 Hz

Design

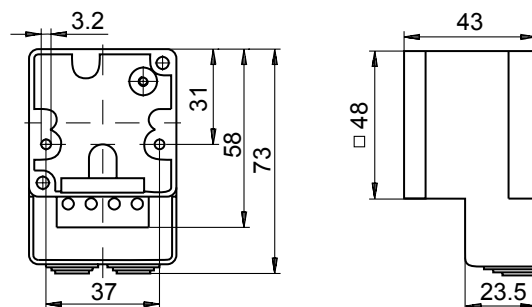
- 02 Built-in mounting $\varnothing 50$ mm with screw terminals and flat connector outlet
Front 48 x 48 mm or 55 x 55 mm with adapter frame (included in delivery)
- 06 Surface mount with screw mounting, screw terminal, snap-in base with terminal cover
- 07 Surface mount with snap-on base for DIN rail, screw terminal

Dimensions

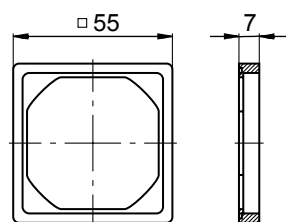
Built-in counter with clip frame



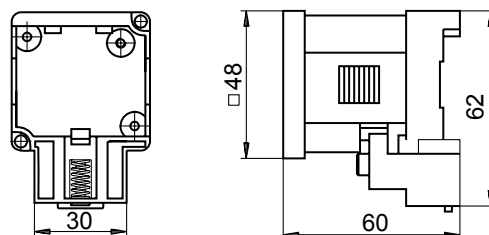
Surface mounting with screw mount and snap-in base



Adaptor frame, front 55 x 55 mm



Surface mounting with snap-in base for DIN rail



Installation steps

